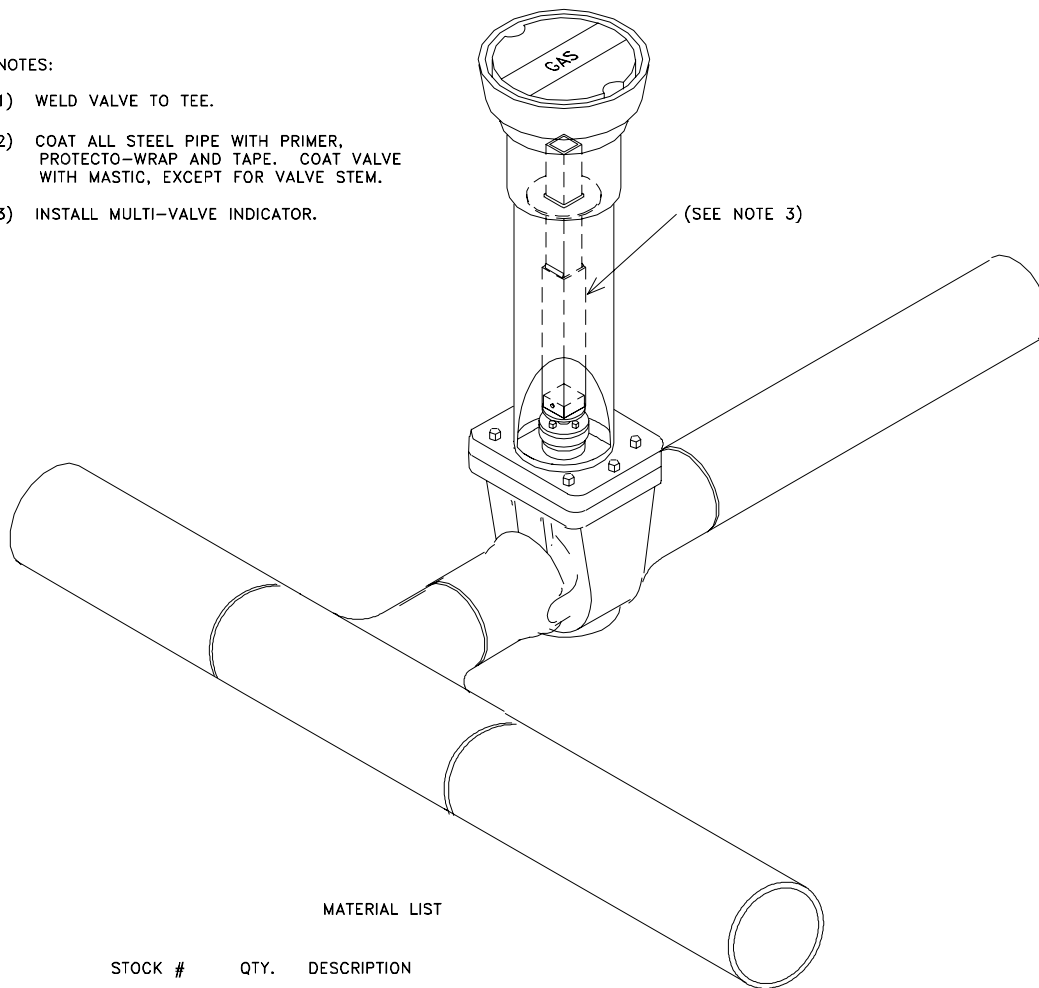


NOTES:

- 1) WELD VALVE TO TEE.
- 2) COAT ALL STEEL PIPE WITH PRIMER, PROTECTO-WRAP AND TAPE. COAT VALVE WITH MASTIC, EXCEPT FOR VALVE STEM.
- 3) INSTALL MULTI-VALVE INDICATOR.



MATERIAL LIST

| STOCK # | QTY. | DESCRIPTION |
|---------|------|--|
| 43-0150 | 1.0 | VALVE 12" WELD ENDS |
| 43-0035 | 1.0 | EXTENSION STEEL VALVE INDICATOR |
| 45-2260 | 1.0 | TEE 12" X 12" WELDING |
| 43-0010 | 1.0 | BOX 6" VALVE CAST IRON |
| 43-0095 | 1.0 | COVER BOX VALVE GAS 6" |
| 41-3000 | 3.0 | PIPE PVC 6" SEWER 6.275 O.D. SDR 35 FOR VALVES |
| 47-0260 | 1.0 | TAPE PROTECTO-WRAP 6 IN. X 50 FT. |
| 47-0300 | 1.0 | TAPE BLACK 2 IN. X 100 FT. |
| 47-0182 | 0.5 | MASTIC |
| 47-0180 | 0.5 | PRIMER |

